

**Bluetooth Wireless Communication Kit
BlueSoleil
Quick Installation Guide**

Host Requirements

- IBM compatible PC with Pentium, Celeron™ processor or equivalent CPU or higher.
- RAM 64M or above
- Screen: 800*600 or above
- Display: adapter True Color 16bits or above.
- Microsoft® Windows®98SE/ME/2000/XP

Contents for each package

- Installation software CD for Windows98SE\ME\2000\XP.
- Bluetooth device, usually a Bluetooth USB dongle
- User's Manual and the Installation guide

Installation Steps

- Step 1: Uninstall any kind of Bluetooth Driver / Utility , Such as Widcomm BTW or Toshiba.
- Step 2: Insert the Installation software CD into the CD-ROM of your machine.
- Step 3: Click on “Install Bluetooth Utility / Driver”



Figure 1: Click on “Install Bluetooth Utility / Driver”

- Step 4: As follow the instructions to finish the software installation.

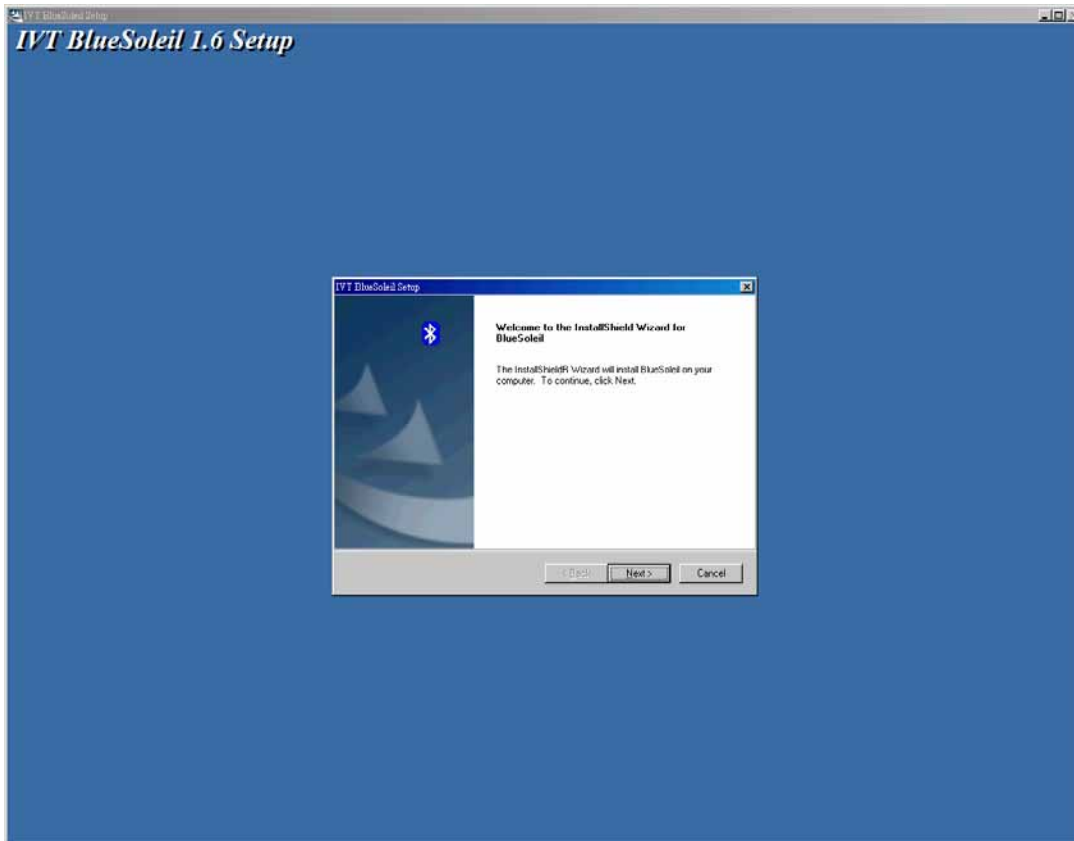


Figure 2: Set up IVT Bluesoleil

- Step 5: Restart the Computer. After the BlueSoleil software package is installed, you will need to restart the computer. This is to make sure that the installed Bluetooth Device takes effect.
- Step 6: When the computer has been restarted, start the BlueSoleil application by clicking **Start|Programs|IVT BlueSoleil|BlueSoleil**. (Figure 3)

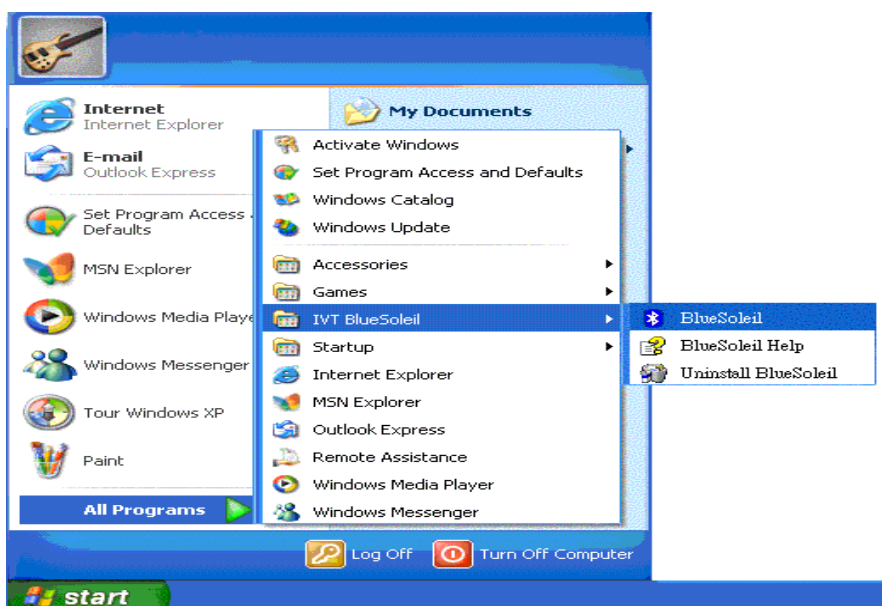


Figure 3: Start BlueSoleil

Note

1. For Windows 98SE and Windows ME, the Dial-up Adapter and Windows's component direct cable connection needs to be installed to run the Dial-up Networking profile and LAN access profile.
2. You need configure Bluetooth Network Adapter IP to run PAN profile.
3. More details on how to use IVT BlueSoleil, please refer to Online Help, User Manual and any other support document.
4. Headset and AV profile not supported on Win98SE and ME.

Notice On Windows 98SE/ME

Expected Outcome:

1. Installed Files & Directories (by default):

- <Windows program files>\IVT Corporation\BlueSoleil
BlueSoleil execution and support files.
- <Current user>\My Documents\BlueSoleil
Support directory. This is the directory for Object Push and Synchronization. Received cards and other objects will be put here.

2. Installed Devices:

- 6 Bluelet virtual COM ports
- 3 Bluelet virtual Modem
- BT Network Adapter
- HID device

Notice On Windows 2000/XP

Expected Outcome:

1. Installed Files & Directories (by default):

- <Windows program files>\IVT Corporation\BlueSoleil
BlueSoleil execution and support files.
- <Current user>\My Documents\BlueSoleil
Support directory. This is the directory for Object Push and Synchronization. Received cards and other objects will be put here.

2. Installed Devices:

- 6 Bluelet virtual COM ports
- 2 Vcomm Manager
- 3 Bluelet virtual Modem
- BT Network Adapter
- 6 HID device

This is a preliminary data, and information provided is subject to change without notice. Actual product design may differ from the illustration shown.