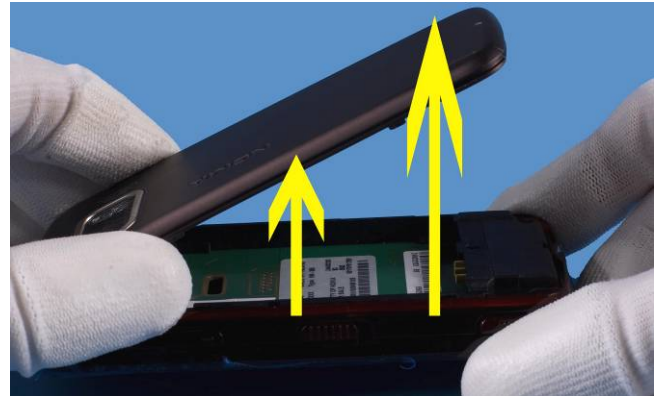


DISASSEMBLY INSTRUCTION



1. Press to release the **BATTERY COVER**.



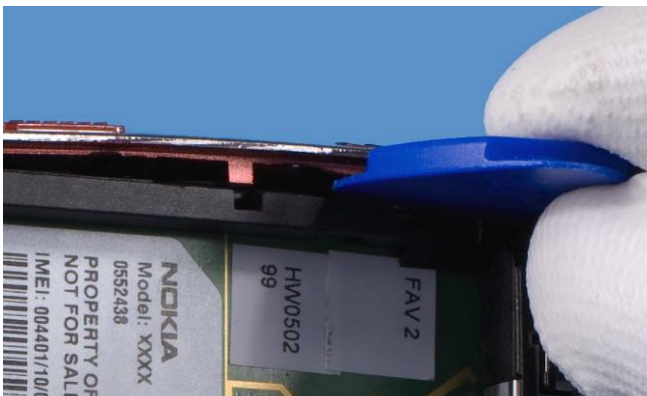
2. Lift up and remove the **BATTERY COVER**.



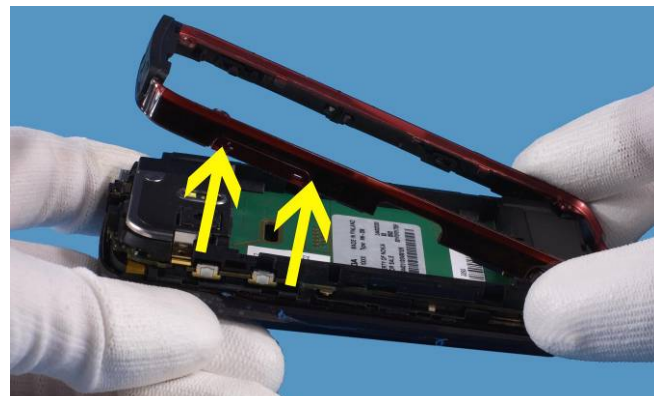
3. Unscrew the four **TORX5+** screws.



4. Release the snaps of the **SIDE BAND ASSY** with **SRT-6**.



5. Do the same on the other side.



6. Remove **SIDE BAND ASSY**.



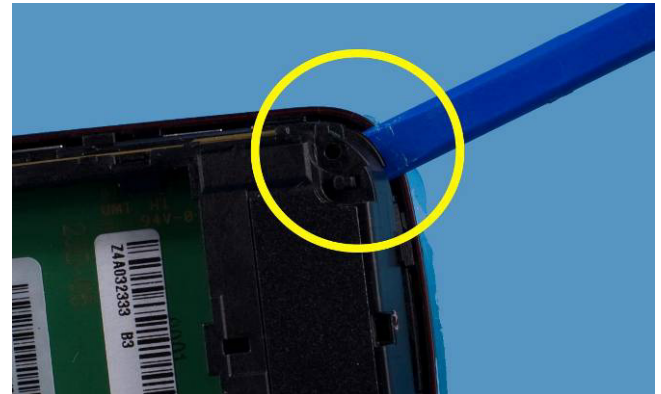
7. Use tweezers to remove **SLIDE KEY**.



8. Release the snap of the **A-COVER** in the bottom corner as shown in the picture with SS-93 tool.



9. Slide with SS-93 tool along the bottom side to release the snaps here as well.



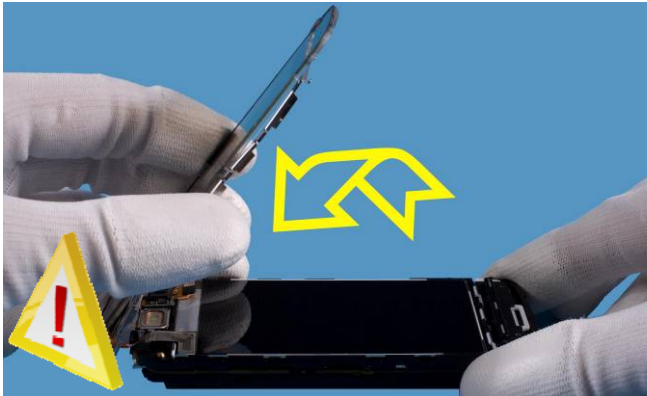
10. Release the snap in the opposite corner of the bottom side.



11. Go on releasing the snaps on both sides of the phone.



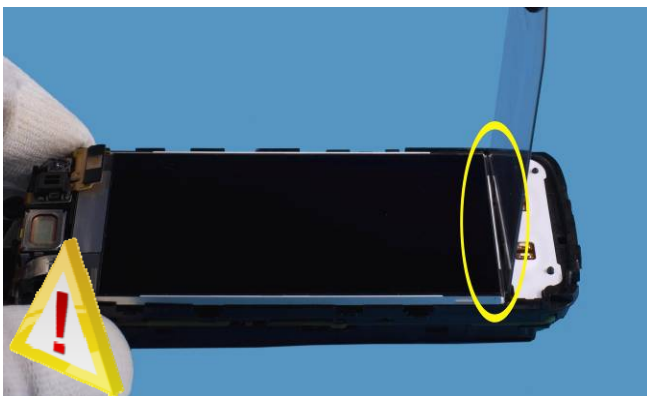
12. Remove **A-COVER**.



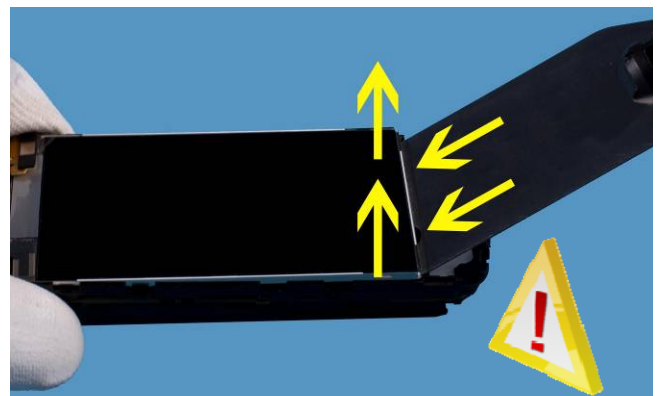
13. Rotate the **TOUCH PANEL ASSY** and **TOUCH FRAME ASSY** in the direction as shown. Be careful not to break off the flex.



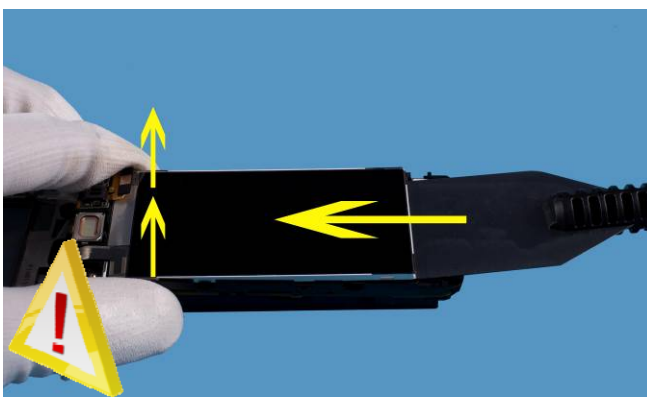
14. Use tweezers to remove **KEYMAT**.



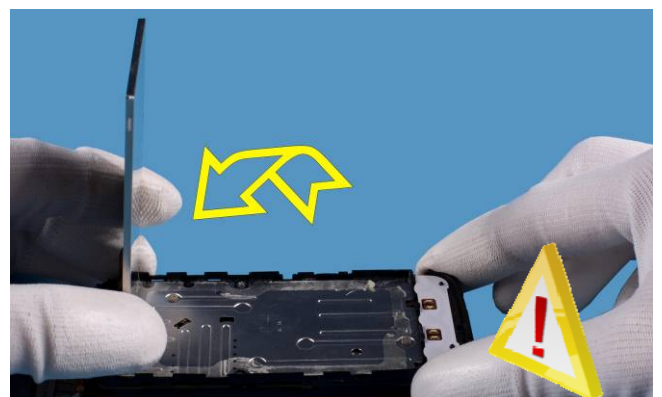
15. Carefully insert **SS-195** display removal tool between **LCD** and **LCD FRAME ASSY**.



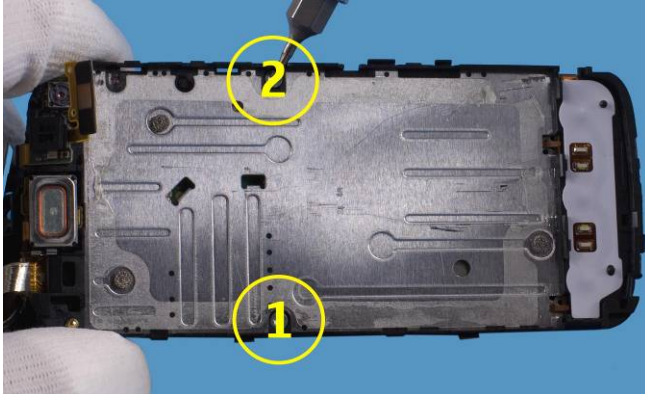
16. Lift up **LCD** on bottom side to detach it from the **LCD FRAME ASSY**.



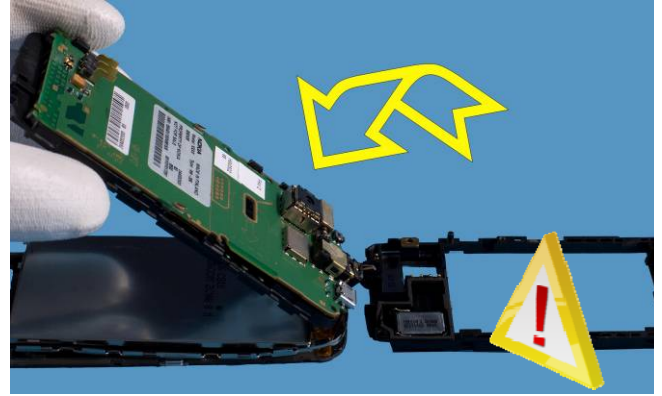
17. Move **SS-195** tool underneath the **LCD** in the direction as shown in the picture to lift up the **LCD** on top side of **LCD FRAME ASSY**.



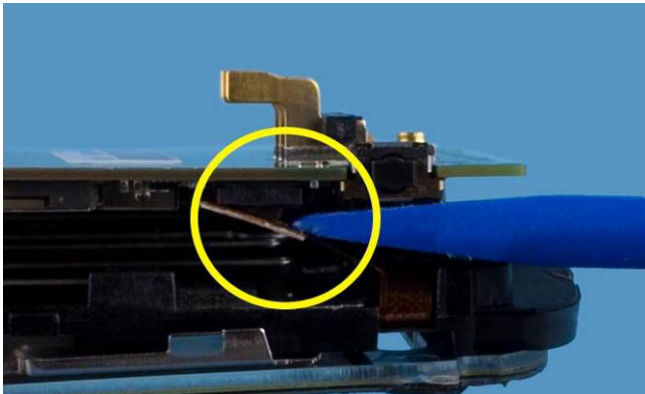
18. Rotate the **LCD** like the **TOUCH PANEL ASSY** and **TOUCH FRAME ASSY** in the direction as shown.



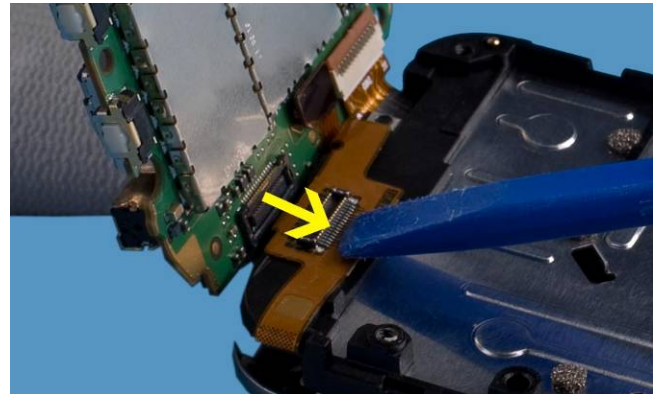
19. Remove the two TORX 5+ screws.



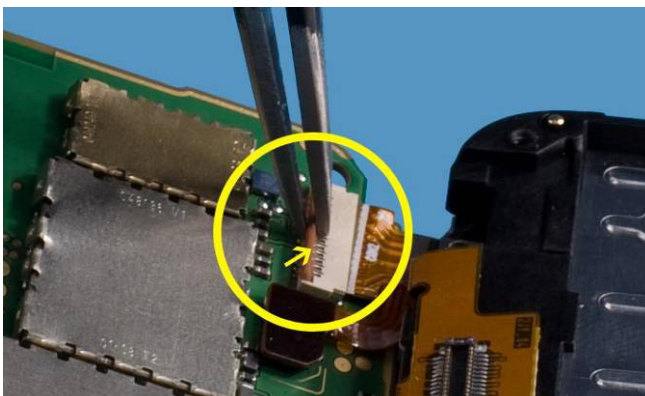
20. Rotate the **PWB** and the **LCD FRAME ASSY** in the direction as shown.



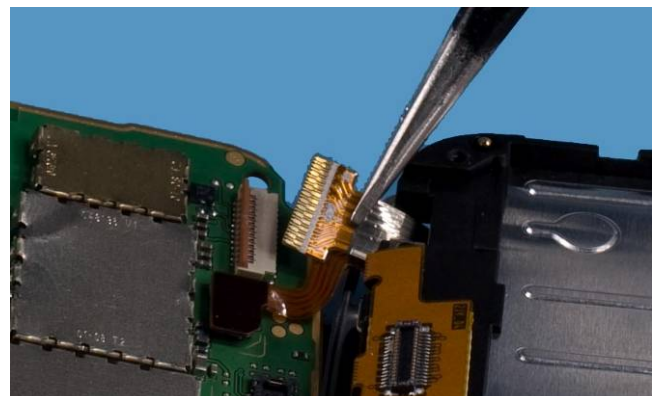
21. Disconnect the **PWB** from the **LCD FRAME ASSY**.



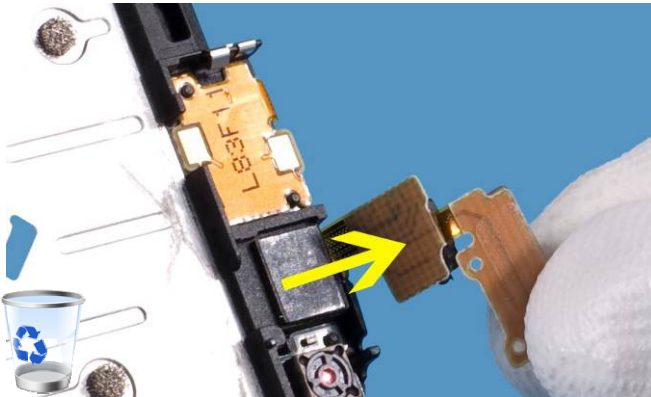
22. Open the connector on the top side to release the **LCD FRAME ASSY**.



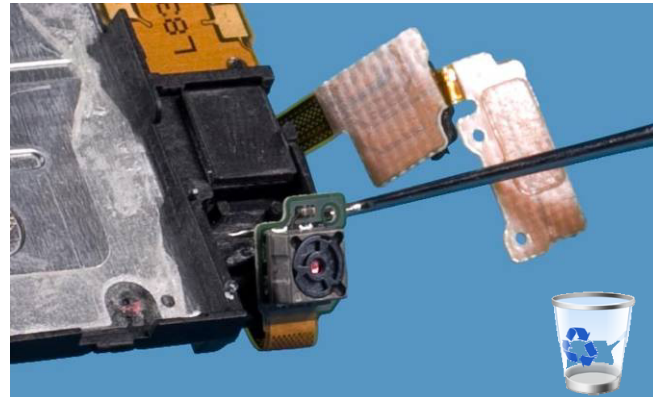
23. Open the flap.



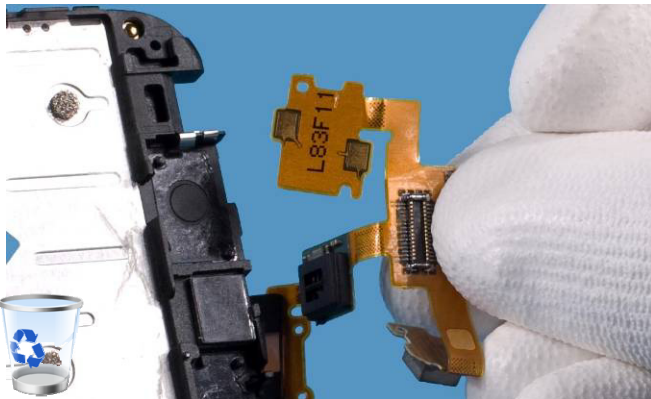
24. Pull the flex out.



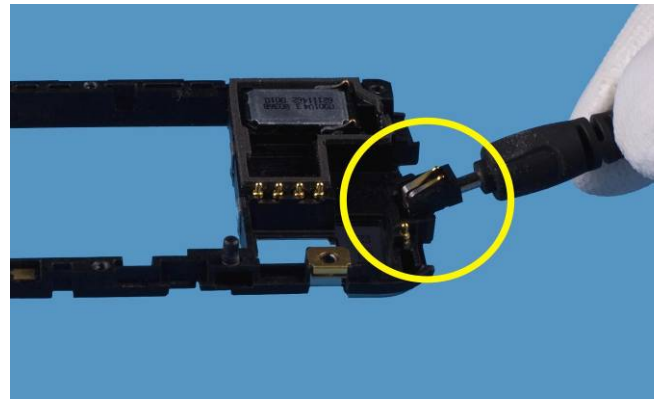
31. Detach the **UPPER FLEX ASSY** in this direction.



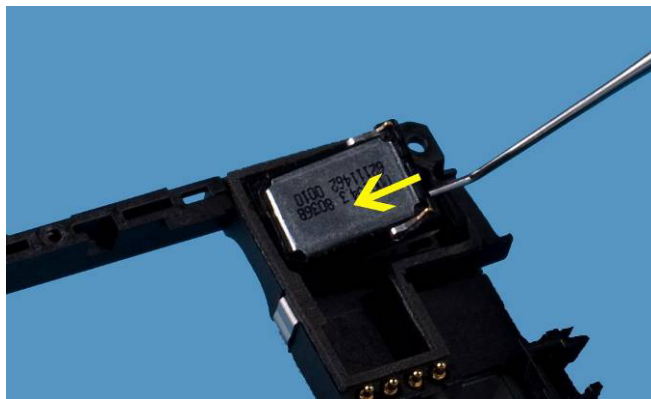
32. Use a dental pick to detach the **UPPER FLEX ASSY**.



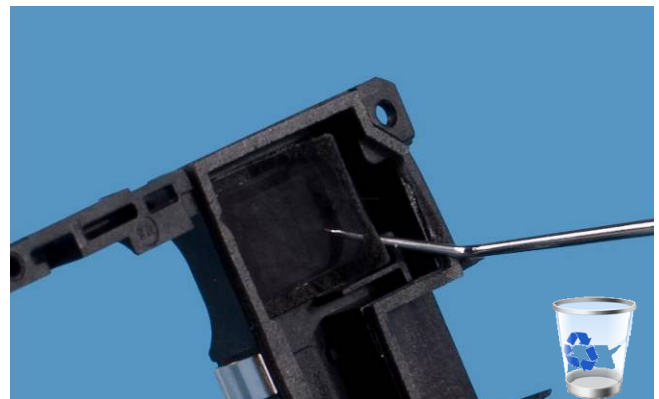
33. Remove **UPPER FLEX ASSY**. **UPPER FLEX ASSY** has always to be renewed.



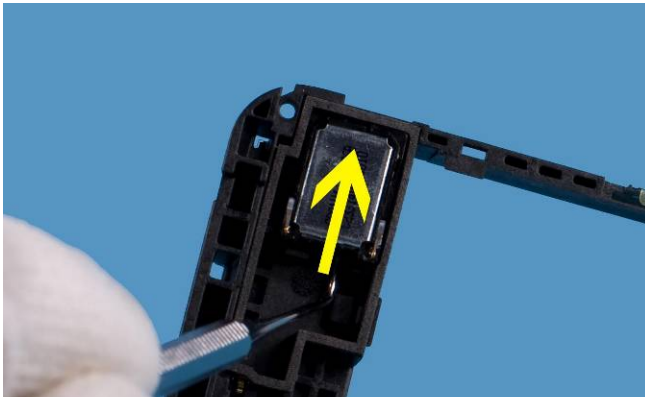
34. Remove **CONN CHR DIA 2.0mm** with a DC-plug.



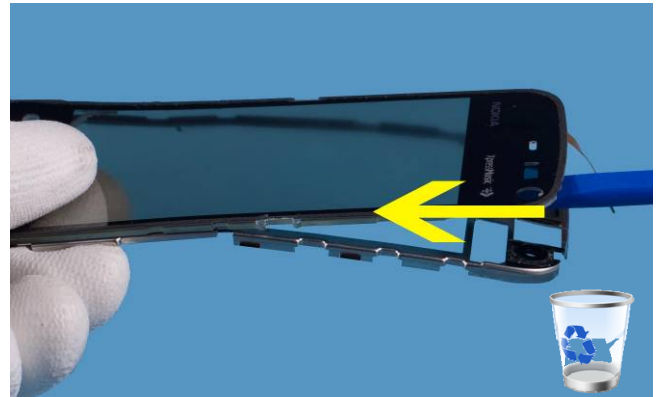
35. Remove **IHF SPEAKER** with a dental pick.



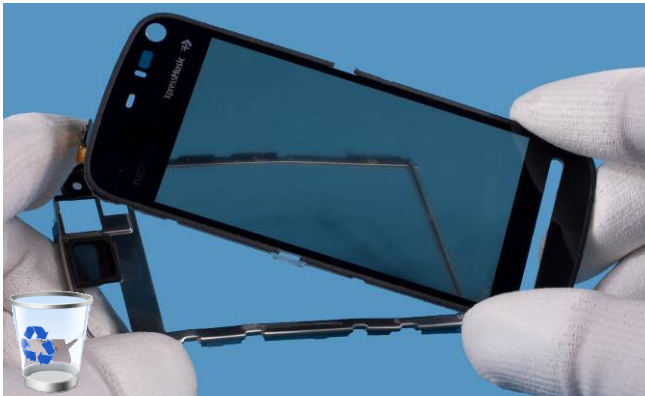
36. Remove **IHF FRONT GASKET** if necessary.



37. Remove the second **IHF SPEAKER** and **IHF FRONT GASKET** if necessary.



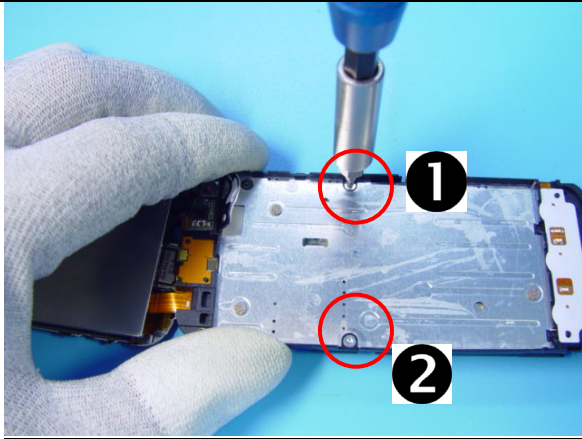
38. Separate the **TOUCH PANEL ASSY** from the **TOUCH FRAME ASSY** with **SS-93** tool.



39. **TOUCH PANEL ASSY** and **TOUCH FRAME ASSY** have always to be renewed.

End of disassembling.

11. ASSEMBLY HINTS



1) Tighten the screws to the torque of 15 Ncm in the order shown.



2) Tighten the screws to the torque of 15 Ncm in the order shown.